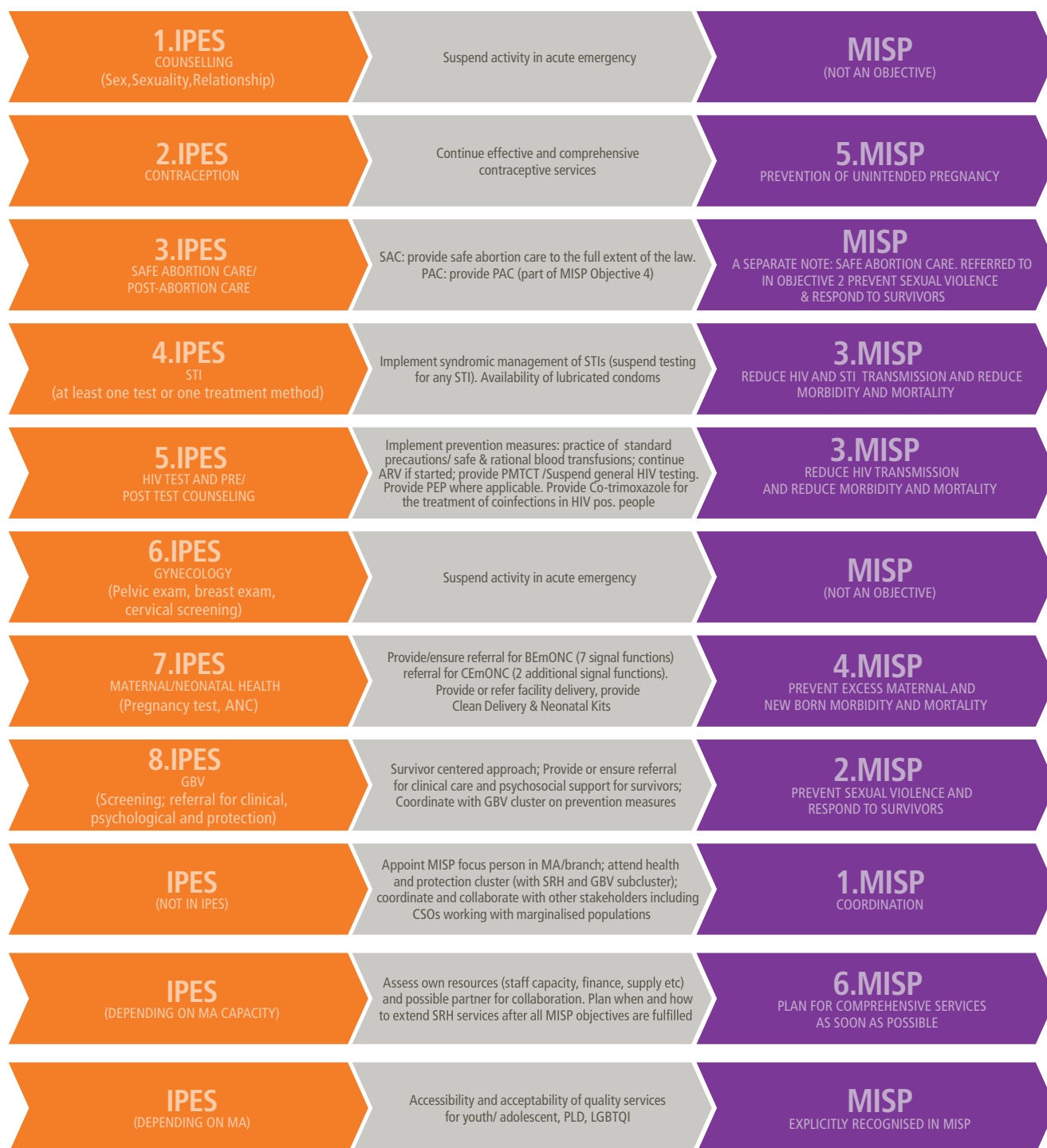


SRHR SERVICES IN IPES AND MISP



*According to 2018 IAfm revision

IPES = Integrated Package of Essential Services

MISP = Minimum Initial Service Package

PMTCT = Prevention of Mother to Child Transmission

PLD = People Living with disabilities

LGBTQI = Lesbian, Gay, Bisexual, Transsexual, Queer, Intersexual